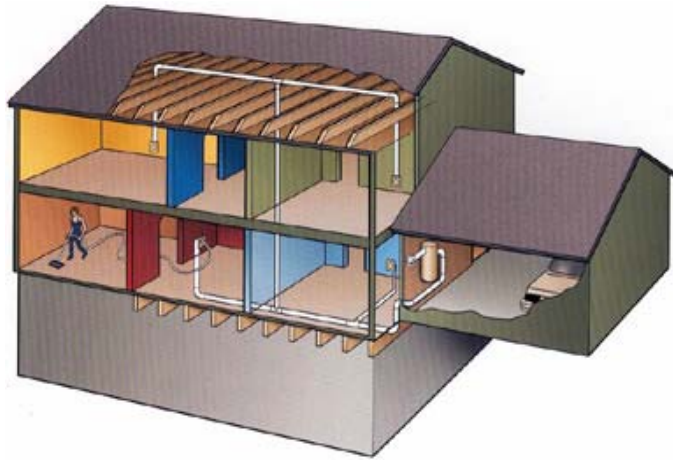




**J. Becher
& assoc., Inc.**
Electrical Contracting &
Low Voltage Division



- We install central vacuum systems! A central vacuum system is great for a person who has allergies. With a conventional vacuum, the power brush sucks up dirt, and filters it through the bag essentially blowing dirt around your home. With a central vacuum, everything that gets sucked into the power brush travels out to the canister. Since the central vacuum canister is mounted in the garage, it eliminates noise associated with vacuuming. Also, a conventional vacuum you carry room to room, so it has to be somewhat light, meaning the manufacturers are limited to the size of the motor they install. Again, with the central vacuum stem being hung in the garage, weight of is not an issue, meaning bigger, more powerful motors are utilized to get the deep down embedded dirt. We offer two different systems; a 3000 and 4000 square foot, which would be dependant on the size of your home. The 3000 system includes (4) outlets, a kick-pan in the kitchen, and a toolkit, which is supplied on the consultation visit. The 4000 system includes everything the 3000 has, plus an additional (2) inlets. We also offer a pre-wire for both of our systems, which makes it easier to finish it at a later date. If you want an extra outlet, or one in a specific location, we have options to allow you to add on to the system.





J. Becher
& assoc., Inc.
Electrical Contracting &
Low Voltage Division

- We offer a **FREE** in home orientation visit to answer questions about your system, show you solutions to finish off any pre-wiring, provide the toolkit (where applicable), and set up your security system (where applicable). We also offer an array of services such as; TV/audio equipment sales, adding wiring after the home is finished, A/V hook up services, and system planning. We strive to be the “Complete Solution” to your new home and wiring system, and are driven to give you the best customer service. If you have a question, we will find the answer!





J. Becher
& assoc., Inc.
Electrical Contracting &
Low Voltage Division



- We offer solutions for your security needs! Whether you're looking for a finished solution, or pre-wire to finish at a later time, we can fill your needs. Our 'Completed System' offers (2) main door sensors, (2) motion detectors, (1) finished keypad by the garage entry door, (1) siren, the main unit, and programming. We have a monitoring company, and can also offer monitoring services if desired. Our 'Pre-Wire' includes (2) main door sensors, (2) pre-wired motion locations, (2) pre-wired keypad locations, (1) pre-wired siren, and all the wire ran to the mechanical room. With the 'Pre-Wire' solution, all of the wiring is zigzagged behind the sheetrock, and can be found at a later time with the use of a 'toner' by the service professional which installs the full system. We also offer add-ons like smoke detectors, carbon sensors, water and freeze sensors!



J. Becher
& assoc., Inc.
Electrical Contracting &
Low Voltage Division

- We offer ABUS multi-room audio systems. Multi-room systems are great if you're looking for a clean, finished look without bulky 'boom boxes' taking up space. This 'Premium' system includes one main hub location, two volume controls, and four speakers. With this system, you have an IR repeater built into the volume control, which sends the signal back to the main hub. This means; if your main hub is in the basement by the audio equipment, and you're in the master bedroom upstairs, you could point your main equipment remotes at the volume control and change radio stations or CD's without leaving the comfort of your bed. With this system, the volume controls are actually independent amplifiers, relieving stress on your receiver, and producing a cleaner sound.





J. Becher
& assoc., Inc.
Electrical Contracting &
Low Voltage Division

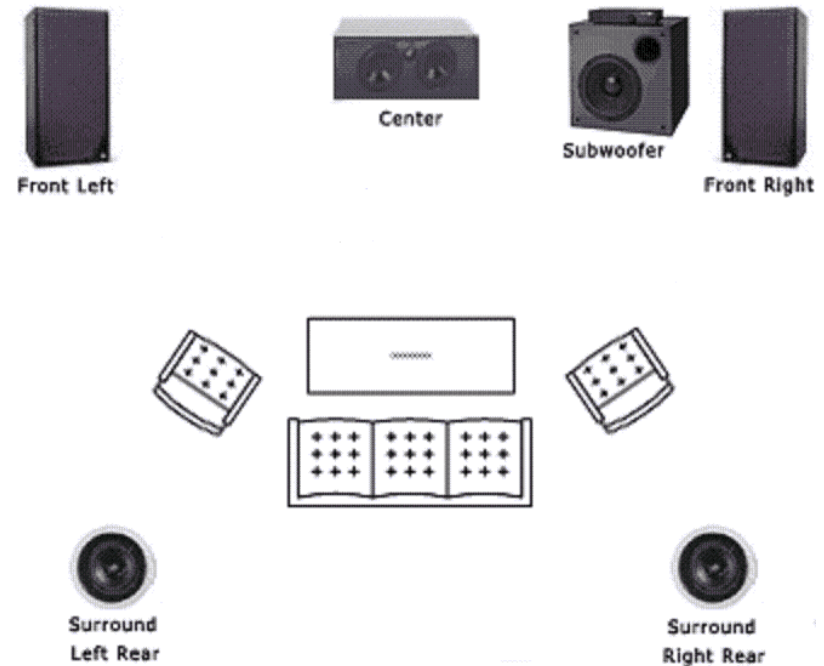
- **Local Source Input-** This is a compliment to our multi-room 'Premium' ABUS music system. In a room of your choice, which already has a room of music, we have an option which allows you to override the main audio source. Picture this; you have a room of audio in your computer room, and the media player on your computer holds all of your digital music which you listen to while doing work, or surfing the net. With this option, you can hook up your computer to the local source input to bypass the main source, allowing you to play two sources in two locations. You could listen to the news in the kitchen, and have your favorite track playing in the computer room at the same time. This is not only limited to your computer area, as any room which has the premium music option can have a 'local source input'. Inputs are an RCA style jack. We also offer an IPOD docking station. This station offers the same principal as the local source input, except it only works with your Ipod. The Ipod dock is located on the wall next to your volume control.





J. Becher
& assoc., Inc.
Electrical Contracting &
Low Voltage Division

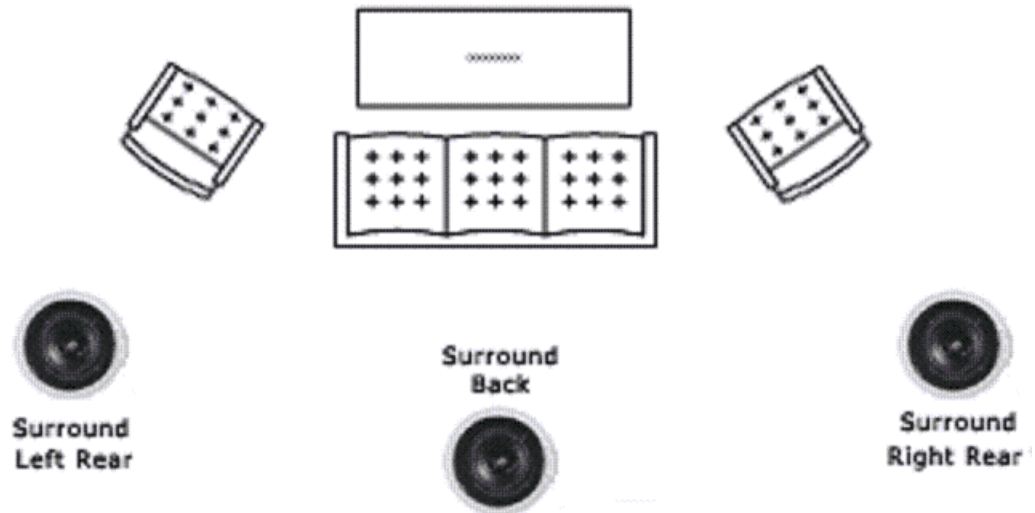
- How often do you watch movies? If you are looking for a theater sound in your home, consider one of our movie options! We offer a variety of solutions for home theater wiring depending on your needs and equipment. Not ready for a complete system yet? We offer a pre-wire to allow you to be ready for the future. Our finished home theater systems include 2 (5channel), 3 (6 channel), or 4speakers (7 channel), in the rear of the system mounted in the ceiling. The front left and right channels are at outlet height, and are finished with binding posts to allow you to hook up your own floor standing speakers. We also offer additional in ceiling speakers for the front left, right, and center, if you are looking to have a completely finished, clean looking theater. It's a great idea to install all of your speakers in the ceiling if you have small children. Tower speakers can be heavy, and injure a child if they fall over.



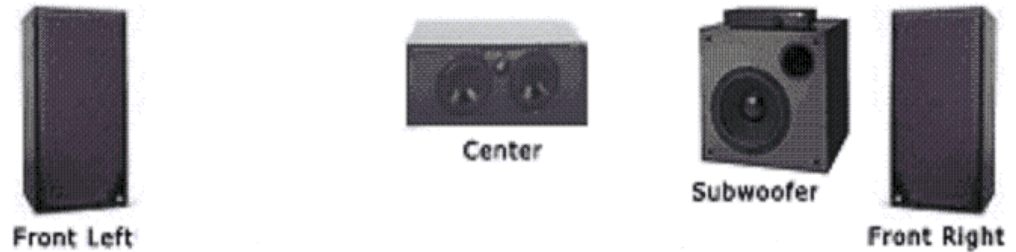
(5)Channel Pictured



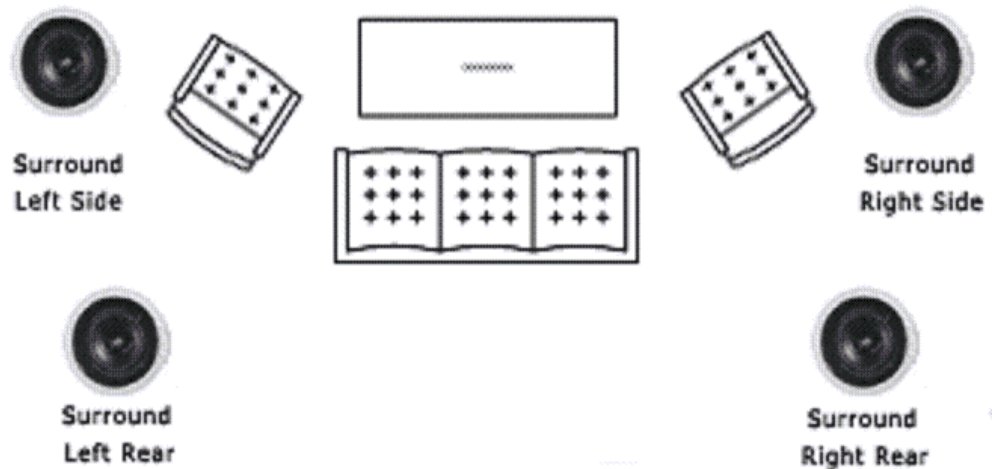
- The (6) channel system adds an additional rear center speaker.



(6) Channel Pictured



- The (7) channel system has (2) extra surround speakers in addition to a (5) channel system.

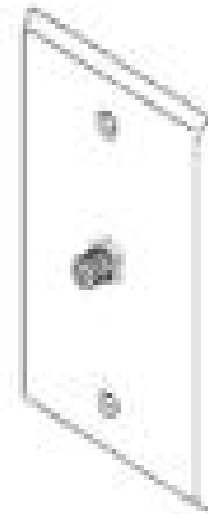


(7) Channel Pictured



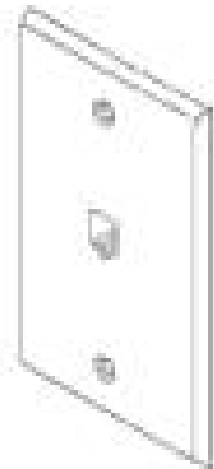
J. Becher
& assoc., Inc.
Electrical Contracting &
Low Voltage Division

- **COAX JACK-**
- A coax jack is used for cable television broadcasts, a single modem location, a single tuner satellite box (phone also required for satellite), or if an outdoor antenna signal is distributed throughout your home.





J. Becher
& assoc., Inc.
Electrical Contracting &
Low Voltage Division



- Phone Jack-
- We install cat5 wiring to all of the phone locations. This allows you to have up to (4) different phone lines. Multiple lines are great if you run a home business, have kids who tie up the phone, or if you want a dedicated fax number.
- With cat5 being ran to these locations, it is possible to turn a phone jack into a data jack in the future with the addition of a RJ45 connector on the enclosure side of the wiring. A job that a technician could have done in 5 minutes.



J. Becher
& assoc., Inc.
Electrical Contracting &
Low Voltage Division

PHONE

AUX/DATA



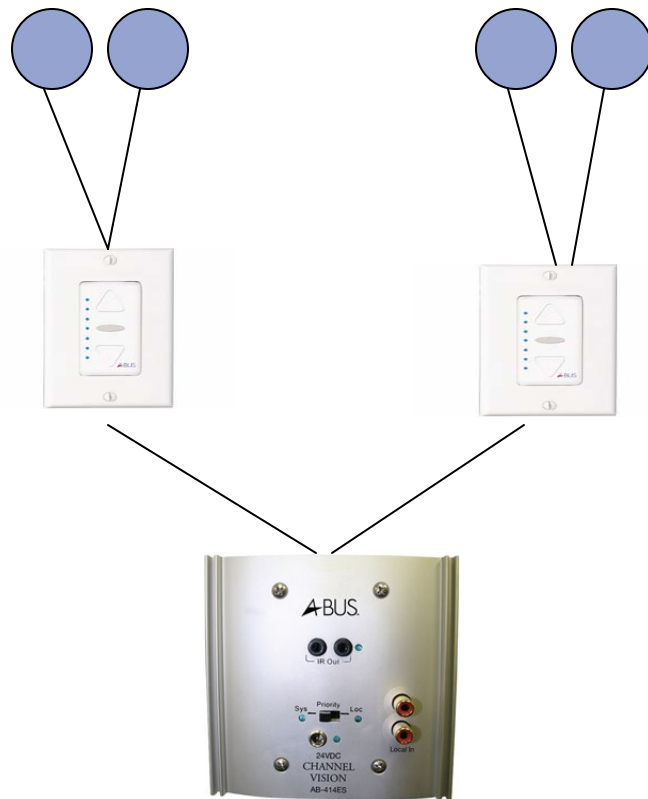
CABLE

AUX/VIDEO/SAT

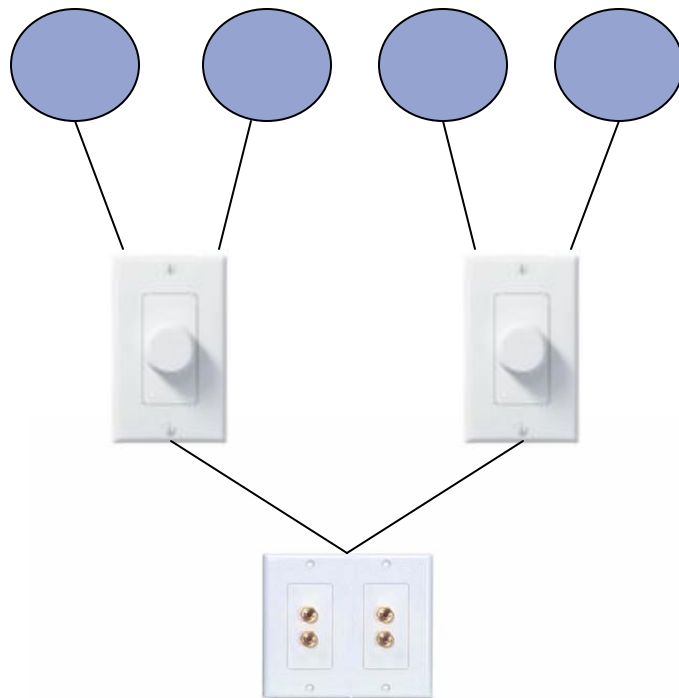
- The MultiMedia jack includes two lines that are active in the splitter; Phone, and Cable.
- You will need a Multimedia jack if you are seeking to have Satellite with a dual tuner (TIVO) box. The dual-tuner box will utilize both coax outputs, and the phone line also. Phone lines are hooked to satellite boxes so they can get updated at night, and to allow you to receive pay-per-view.
- The multimedia is useful in locations where a computer is used. You would be able to use DSL (phone line), Broadband (cable line), or if multiple computers are used, you can have your modem, router and equipment downstairs, and utilize the aux/data jack in the multimedia(s).



J. Becher
& assoc., Inc.
Electrical Contracting &
Low Voltage Division



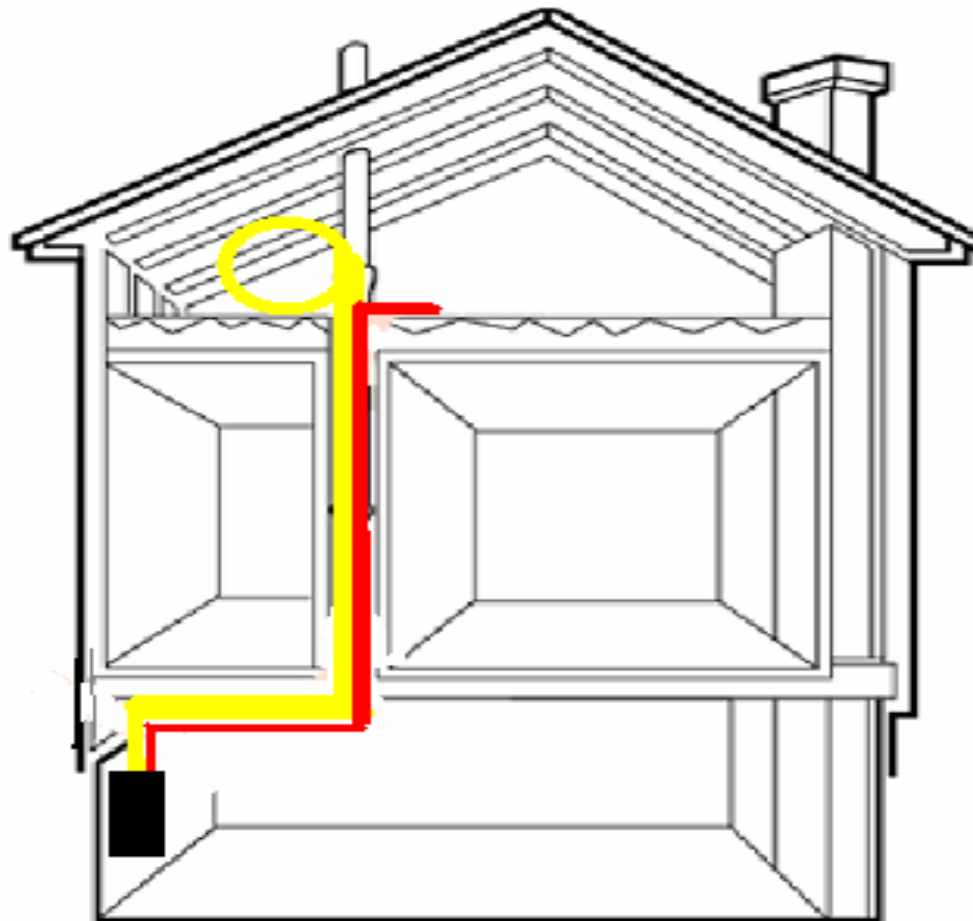
- Diagram of the 'Premium' ABUS music system.
- Pictured is the Main Hub on the bottom. This hub distributes the audio to the volume controls in each room. Each volume control is connected to (2) speakers in the selected rooms.
- The 'Premium' music option starts with two rooms included, and additional rooms can be purchased if desired.
- With the 'Premium' system, an infrared repeater is utilized. This means you could take your main system remotes into your chosen rooms of audio, point them at the volume control, and control the main system. IR eyes attach onto your components from the main hub.



- Diagram of the 'Basic' multi-room audio system.
- The main hub is composed of 'binding posts'
- From the main hub, signal travels to the two volume controls in each room.
- From the (2) rotary volume controls, the signal travels to the (4) speakers, (2) in each room.
- With this system, your receiver will power the system with its internal amplifier.



J. Becher
& assoc., Inc.
Electrical Contracting &
Low Voltage Division



Red- Tech Tube. Tech tube runs from the media panel in the basement to the attic access hatch. This allows later installation of wiring in the upper level. Attic runs for satellite can be fed through this tube. Inside the tube you will find a pull string.

Yellow- Attic Runs. Attic runs allow easy installation of a satellite. 5 coax runs with a ground are ran from the media panel in the basement to the attic access hatch. The satellite technician can simply uncoil the wire, and pop it out through a roof vent. No wires slapping on the side of your home when it gets windy, and no rust trails from staples.



J. Becher
& assoc., Inc.
Electrical Contracting &
Low Voltage Division



- One Level Tech Tube-
- This tech tube is a (1) inch and a half plastic conduit which runs from your plasma TV location, through the walls behind the sheetrock to your audio/video components. Give your expensive plasma television a nice, clean installation with no wiring hanging down the wall. Ideal for a fireplace mounted television. The tech tube is ran anywhere in the single room which the plasma will be installed in.